



TIIG
INJURY SURVEILLANCE IN THE NORTH WEST OF ENGLAND

ROCHDALE INFIRMARY EMERGENCY DEPARTMENT

MONTHLY BULLETIN: OCTOBER 2013 TO SEPTEMBER 2014

This bulletin provides a breakdown of all injury attendances to Rochdale Infirmary Emergency Department (ED) between October 2013 and September 2014.

During this twelve month period there were 21,405 injury attendances to the ED. The month with the highest number of attendances, calculated as a daily average, was June 2014 (73 per day) with December 2013 having the lowest attendances (50 per day; **Figure 1**).

Males accounted for over half (53%) of all injury attendances (**Figure 1**). The highest proportions of attendances were for those aged between five and 19 years (28%) and between 20 and 34 years (23%; **Figure 2**).

The majority (70%) of injury attendances were recorded as other injuries. Falls accounted 15% of injuries, followed by 6% caused by road traffic collisions (RTCs; **Table 1**).

Close to three in ten (27%) fall attendees were aged 65 years or over, half (50%) of deliberate self-harm (DSH) attendees were aged between 20 and 34 years and over four in ten (43%) RTC attendees were aged between 20 and 34 years (**Figure 3**).

Table 2 shows the ethnicity of injury attendees to Rochdale Infirmary Hospital ED. The majority (72%) were White.

The disposal of a patient can give an indication of the severity of the injuries sustained. Over six in ten

(65%) attendees were discharged, almost a third (32%) were referred for further treatment and 2% were admitted to hospital (**Table 3**). Seven in ten (70%) RTC attendees were discharged, 57% of burns and scald attendees were referred for follow-up treatment and 12% of DSH attendees were admitted to hospital (**Table 4**).

Table 5 shows the arrival method of attendances to Rochdale Infirmary ED. Three-quarters (75%) of attendees arrived by private transport.

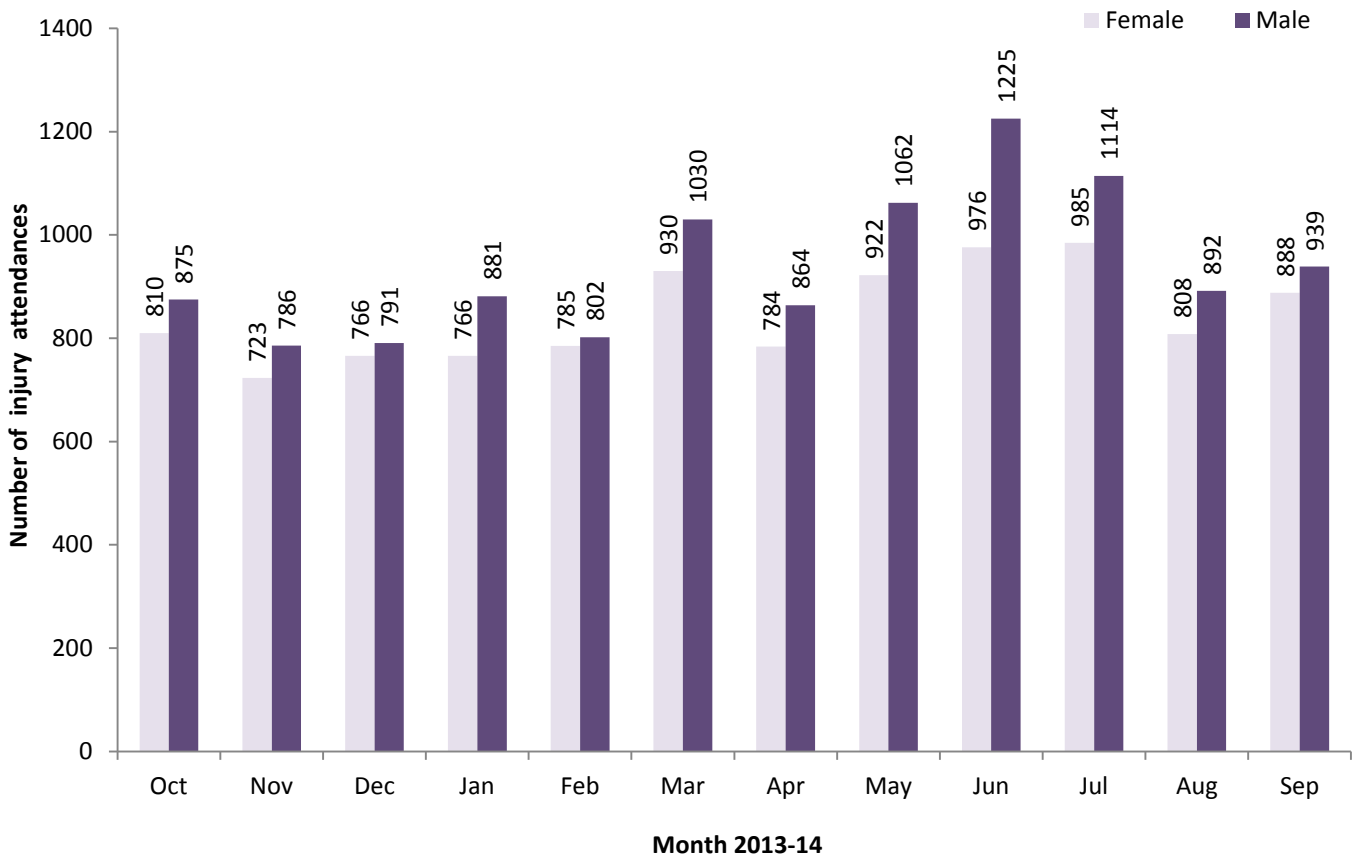
Table 6 shows incident location and injury group. Of all injuries, close to half (49%) occurred in the home while 12% occurred in a public place. Thirty-five per cent of assaults occurred in a public place and 70% of DSH injuries occurred at home.

Assault attendances

Between October 2013 and September 2014 there were 547 assault-related injury attendances to Rochdale Infirmary ED.

Close to seven in ten (68%) were male and four in ten (40%) were aged between 20 and 34 years. Over a third (35%) of assaults occurred in a public place (**Table 7**).

Figure 1: ED injury attendances by gender and month, October 2013 to September 2014[^]



[^] There were <5 records where the gender was unknown; these have been omitted from the chart.

Figure 2: ED injury attendances by age group and month, October 2013 to September 2014

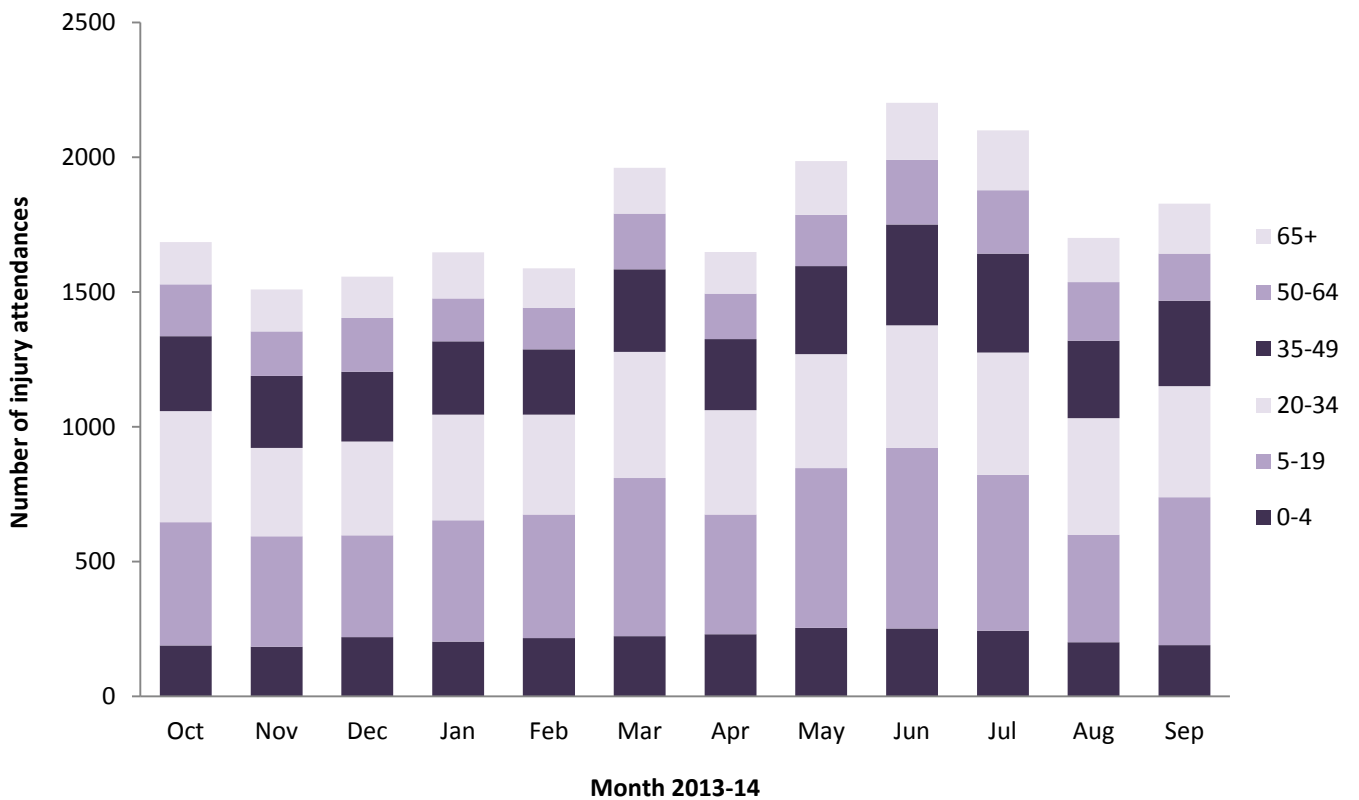


Table 1: ED injury attendances by injury group and month, October 2013 to September 2014¹

Injury group	Oct	Nov	Dec	Jan	Feb	Mar	Apr	May	Jun	Jul	Aug	Sep	Total	%
Other injury	1131	1014	1056	1170	1176	1401	1155	1335	1554	1508	1208	1263	14971	70
Fall	267	258	281	263	212	290	280	363	352	243	218	277	3304	15
RTC	143	92	95	88	85	104	70	116	87	113	85	102	1180	6
Assault	43	43	43	50	36	40	40	47	54	57	45	49	547	3
Burns & scalds	46	63	50	38	42	57	46	64	56	47	35	45	589	3
Bites & stings	<55	<40	27	26	<35	61	<55	51	87	<135	102	85	740	3
DSH	***	***	5	12	***	7	***	9	11	***	7	6	74	0
Total	1685	1509	1557	1647	1587	1960	1648	1985	2201	2099	1700	1827	21405	100

Figure 3: ED injury attendances by age group and injury group (excluding other injury), October 2013 to September 2014

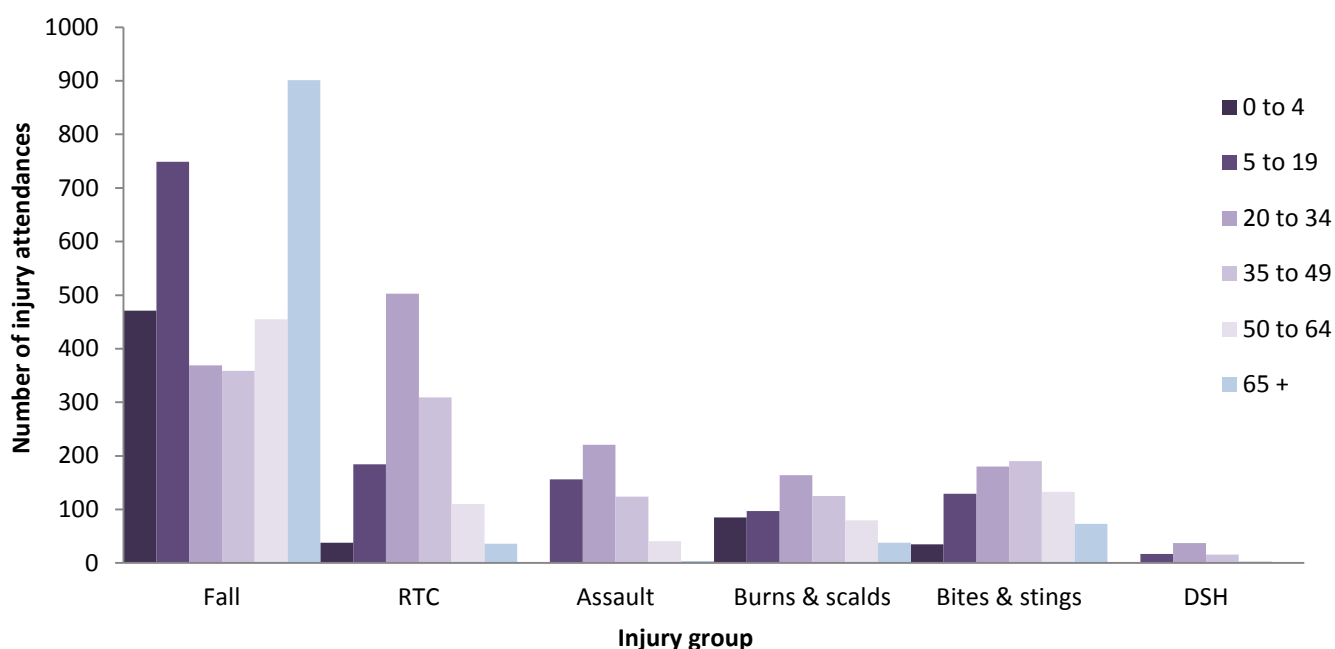


Table 2: ED injury attendances by ethnicity and month, October 2013 to September 2014^{1,2}

Ethnicity	Oct	Nov	Dec	Jan	Feb	Mar	Apr	May	Jun	Jul	Aug	Sep	Total	%
White	1220	1125	1110	1180	1136	1437	1184	1410	1580	1572	1223	1319	15496	72
Pakistani	297	269	309	335	320	365	322	416	426	359	343	359	4120	19
Not recorded	33	11	21	26	24	31	34	25	35	32	34	26	332	2
Bangladeshi	41	35	45	43	27	35	36	31	51	39	36	31	450	2
Black	30	21	19	15	20	34	20	31	35	30	11	26	292	1
Mixed	19	20	15	25	23	21	23	19	29	23	16	22	255	1
Any other ethnic group	23	9	17	12	15	11	18	28	21	23	17	18	212	1
Any other Asian background	11	10	7	6	12	14	5	13	13	12	13	16	132	1
Indian	<15	<10	<15	5	<10	7	<10	<10	<10	<10	<10	<10	89	0
Chinese	***	***	***	0	***	5	***	***	***	***	***	***	27	0
Total	1685	1509	1557	1647	1587	1960	1648	1985	2201	2099	1700	1827	21405	100

¹ Please note that for all tables, all numbers less than five have been suppressed (with ***) in line with patient confidentiality. If there is only one number less than five in a category then two numbers will be suppressed to prevent back calculation from totals.

² White = Irish, British, other White background; Mixed = White and Black, White and Asian, mixed - any other; Black = African, Caribbean, other Black.

Table 3: ED injury attendances by disposal method and month, October 2013 to September 2014³

Disposal method	Oct	Nov	Dec	Jan	Feb	Mar	Apr	May	Jun	Jul	Aug	Sep	Total	%
Discharged	1187	1075	1052	1082	983	1240	1096	1228	1417	1342	1112	1173	13987	65
Referral/follow-up	451	402	454	522	572	672	514	693	724	705	546	593	6848	32
Admitted	33	25	41	34	22	38	23	50	38	40	32	37	413	2
Other	14	7	10	9	10	10	15	14	22	12	10	24	157	1
Total	1685	1509	1557	1647	1587	1960	1648	1985	2201	2099	1700	1827	21405	100

Table 4: ED injury attendances by disposal method and injury group, October 2013 to September 2014^{1,3}

Disposal method	Assault		Bites & Stings		Burns & scalds		DSH		Fall		RTC		Other injury		Total	
	n	%	n	%	n	%	n	%	n	%	n	%	n	%	n	%
Discharged	333	61	569	77	227	39	35	47	1971	60	826	70	10026	67	13987	65
Referral/follow-up	165	30	165	22	336	57	22	30	1105	33	344	29	4711	31	6848	32
Admitted	13	2	<10	1	11	2	9	12	166	5	***	0	205	1	413	2
Other	36	7	***	0	15	3	8	11	62	2	<10	1	29	0	157	1
Total	547	100	740	100	589	100	74	100	3304	100	1180	100	14971	100	21405	100

Table 5: ED injury attendances by arrival mode and month, October 2013 to September 2014¹

Arrival mode	Oct	Nov	Dec	Jan	Feb	Mar	Apr	May	Jun	Jul	Aug	Sep	Total	%
Private transport	1251	1148	1148	1206	1179	1459	1233	1505	1620	1568	1263	1378	15958	75
Taxi	159	128	163	180	163	198	180	194	202	199	157	174	2097	10
Foot	127	97	93	93	94	110	90	96	143	121	118	101	1283	6
Ambulance	61	50	68	66	55	78	49	84	96	87	77	59	830	4
Other	43	36	43	47	48	63	54	60	76	70	46	50	636	3
Public transport	28	28	21	25	33	30	30	33	42	34	24	41	369	2
Work transport	<15	16	12	17	<15	17	<10	<10	14	11	<15	<25	162	1
Police	***	6	9	13	***	5	***	***	8	9	***	***	70	0
Total	1685	1509	1557	1647	1587	1960	1648	1985	2201	2099	1700	1827	21405	100

Table 6: ED injury attendances by incident location and injury group, October 2013 to September 2014¹

Incident location	Assault		Bites & stings		Burns & scalds		DSH		Fall		RTC		Other injury		Total	
	n	%	n	%	n	%	n	%	n	%	n	%	n	%	n	%
Home	120	22	281	38	376	64	52	70	1464	44	24	2	8186	55	10503	49
Other	114	21	198	27	58	10	9	12	437	13	1109	94	2680	18	4605	22
Public place	193	35	<180	24	12	2	***	1	740	22	<20	1	1381	9	2521	12
Work	34	6	48	6	57	10	0	0	107	3	5	0	1015	7	1266	6
Educational establishment	25	5	***	1	13	2	***	3	307	9	***	0	993	7	1345	6
Not recorded	61	11	31	4	73	12	10	14	249	8	25	2	716	5	1165	5
Total	547	100	740	100	589	100	74	100	3304	100	1180	100	14971	100	21405	100

³ Admitted = admitted to ED bed/became a lodged patient of the same health care provider; Discharged = discharged - did not require any follow-up treatment; Referral/follow-up = discharged - follow-up treatment to be provided by GP, referred to ED clinic, referred to fracture clinic, referred to other out-patient clinic, transferred to other health care provider, referred to other health care professional; Other = died in department, left department before being treated, left department having refused treatment, other.

ASSAULTS

Table 7: ED assault attendances by gender, incident location and age group, October 2013 to September 2014¹

	Assault attendances (n=547)		All injury attendances (n=21,405)
	n	%	%
Gender			
Male	371	68	53
Female	176	32	47
Location	n	%	%
Home	120	22	49
Other	114	21	22
Public place	193	35	12
Educational establishment	25	5	6
Work	34	6	6
Not recorded	61	11	5
Age group	n	%	%
0 - 4	***	0	12
5 - 19	156	29	28
20 - 34	221	40	23
35 - 49	124	23	17
50 - 64	41	7	11
65 plus	***	1	10

Published January 2015

Trauma and Injury Intelligence Group

Centre for Public Health, Faculty of Education, Health and Community, Liverpool John Moores University,
2nd Floor, Henry Cotton Building, Liverpool L3 2ET

T: 0151 231 4498 | E: tiig@ljmu.ac.uk | W: www.tiig.info and www.cph.org.uk | Twitter: [www.twitter.com/tiig_cph](https://twitter.com/tiig_cph)